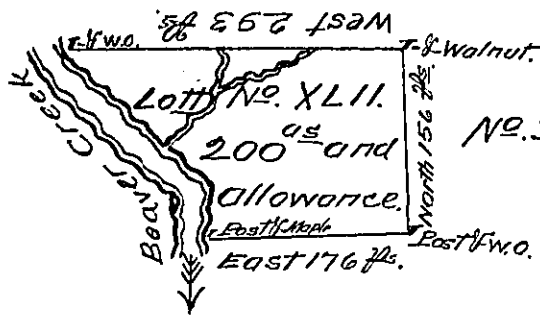


No. 3-300.



Courses down big Beaver Creek

South 46° East 173 fms.

No. 32. South --- 16 fms.

South 21° west 21 fms.

No 3-500<sup>as</sup>

In pursuance of an Act of General Assembly of the State of Pennsylvania passed the 24<sup>th</sup> day of Feb<sup>y</sup>. 1785. Entitled An Act for directing the mode of distributing the donation Lands promised the Troops of this Commonwealth, and by Order of the Surveyor General with the approbation of the Honorable the Supreme Executive Council I have surveyed on the 12<sup>th</sup> day of October 1785. The above discribed Tract of Two Hundred acres of Land and allowance of six  $\frac{1}{2}$  Cent. for Roads &c. No XLII. situate in district No. 1. on the west side of the Allegany River, in the County of Westmoreland.

To John Lukens Esq<sup>t</sup>.  
Surveyor General.

William Alexander D.S.

IN TESTIMONY that the above is a copy of the original remaining on file in the Department of Internal Affairs of Pennsylvania, made conformably to an Act of Assembly approved the 16th day of February, 1833, I have hereunto set my Hand and caused the Seal of said Department to be affixed at Harrisburg, this Twenty first day of May 1908.

*Henry Howell*  
Secretary of Internal Affairs.